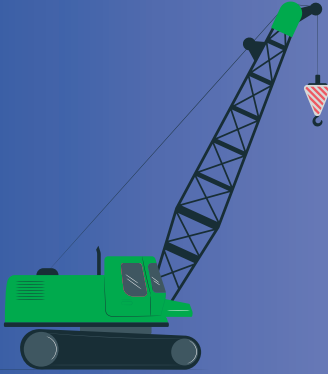


SAFETY FIRST!

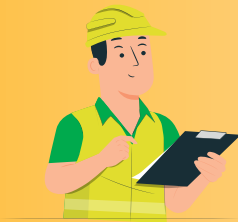
HOISTING INSTRUCTIONS

1. PREPARATION



- Use the correct equipment
 - Crane length?
 - Vacuum lifter type (capacity)?
 - Situation (canopy, balcony, interior glazing etc.)?
- Ensure that the working area is clean, tidy and free of obstacles.

2. LMRA



- Check the hoisting equipment for damage.
- Check that the turning parts are locked
- Has the hoisting equipment been inspected regularly?
- Wind force 6 or higher: do not hoist!
- Storm: do not hoist!
- Frost: do not install glass!
- Heavy rain: do not install glass!
- Hoisting machine stabilized on a flat hard surface?

3. SAFETY



- Mark off the hoisting area
- Persons must never walk or stand under the load!
- Ensure that there is a stable surface under the outriggers
- Avoid hand contact, use PPE
- Check that the turning parts are locked
- Do not lift glass and frame transport racks
- Use vacuum lifters to control glass while hoisting
- Pay attention at all times while hoisting

4. COMMUNICATION



- Communicate with the crane operator using the walkie-talkie
- Know the hand signals and use them